



5 SHADES OF GREASE

BROSIA



Our line of grease **BROSIA** works for all type of applications in fields as diverse as construction, manufacturing, agri-food, mining, quarrying and transports.

Whether mineral or synthetic, multi-purpose or single-usage specific, our formulas offer a high level of performance regardless of your equipment's environmental stresses or operational conditions (rigorous or moderate), load (more or less heavy), thermal environment (from normal to extreme), chemical environment (more or less acidic) or humidity level.

All of our different types of grease are oil based with a specific thickening agent and contain a system of high-tech additives that make each of them long lasting, durable and reliable.



MULTI N 2
Opaque beige



XPERF PU V2
Opaque beige



SPECIAL BENTONE
Dark blond



SPECIAL BRH
Opaque black

A range of solutions

Using one of the grease solutions from the **BROSIA** line for your machines will make them more durable, reliable and long lasting.



MULTI C 000/00
Dark green



MULTI C 1
Light blond



MULTI C 2
Blond



XPERF PTFE WC 1.5
Opaque beige



SPECIAL CU
Iridescent opaque copper



SPECIAL SELLETTE
Opaque black



MULTI C 3
Blond



MULTI BLACK C 2
Opaque black



MULTI TACK WS 2
Green



XPERF WSC 2
Opaque blue



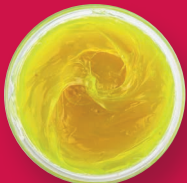
SPECIAL SCOPE
Opaque chalk



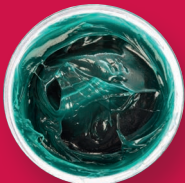
SPECIAL SPECA H
Dark blond



MULTI WC 2
Green



MULTI SC 2
Lemon yellow



MULTI WSC 2
Bluish green



MULTI BLACK WSC 2
Opaque black



XPERF PLUS WSC 2
Dark blond



SPECIAL CLXL
Light blond



SEA TACK W 1.5
Emerald green



MULTI WSC 2
Opaque cream

MULTI

XPERF

SPECIAL

SEA

AURAE

NAME	GREASE DESCRIPTION MULTI-PURPOSE	ADVANTAGES	NLGI GRADE	OPERATING TEMPERATURE	THICKENING AGENT	TYPE OF BASE OIL	40°C HdB VISCOSITY	WELDING LOAD	CLASSIFICATION		COLOUR
									ISO 12924-L	DIN 51502	
MULTI N 2	ANTI-CORROSION	<ul style="list-style-type: none"> • Solid anti-corrosion protection 	2	-20°C to +120°C	Lithium	Mineral	130	315 Kg	XBCHB2	KP2K-20	Beige
	APPLICATIONS <ul style="list-style-type: none"> • Slide bearings • Roller bearings • Linear guidance systems • Various-pressure central lubrication 										
MULTI C 000/00	EXTREME PRESSURE	<ul style="list-style-type: none"> • Extreme pressure 	000/00	-40°C to +115°C	Lithium	Mineral	115	315 Kg	XDBDA 000-00	KP00G-40	Dark green
MULTI C 1	APPLICATIONS <ul style="list-style-type: none"> • Slide bearings • Roller bearings • Linear guidance systems • Various-pressure central lubrication 		1	-30°C to +140°C					XCCEB 1	KP1N-30	Light blond
MULTI C 2			2	-30°C to +140°C					XCCEB 2	KP2N-30	Blond
MULTI C 3			3	-30°C to +140°C					XCCEB 3	KP3N-30	Blond
MULTI BLACK C 2	WITH GRAPHITE AND MoS2	<ul style="list-style-type: none"> • Extreme pressure • Solid anti-corrosion protection • Containing graphite and MoS2 	2	-20°C to +130°C	Lithium	Mineral	110	315 Kg	XBCHB 2	KPF2K-20	Opaque black
	APPLICATIONS <ul style="list-style-type: none"> • Slide bearings • Roller bearings • Linear guidance systems • Low-speed, intense-load bearings 										
MULTI TACK WS 2	ALL-MATERIAL ADHESIVE	<ul style="list-style-type: none"> • Remarkable adhesive qualities on all materials • Mechanical shearing resistance • Water resistance 	2	-25°C to +130°C	Lithium Calcium	Semi-Synthetic	320	250 Kg	XCCGB 2	KP2K-25	Green
	APPLICATIONS <ul style="list-style-type: none"> • Bearings • Slide bearings - Rails • Movements subject to harsh operating conditions (water) 										
MULTI SC 2	EXTREME PRESSURE	<ul style="list-style-type: none"> • Extreme pressure 	2	-30°C to +150°C	Lithium	Mineral	150	315 Kg	XCDHB 2	KP2N-30	Lemon yellow
	APPLICATIONS <ul style="list-style-type: none"> • Lubrication of all mechanical components, roller bearings and slide bearings operating under heavy load and in a wide temperature range. 										
MULTI WSC 2	LONG LASTING	<ul style="list-style-type: none"> • Solid mechanical stability • Extreme pressure • Excellent water resistance 	2	-30°C to +140°C	Lithium Calcium	Semi-Synthetic	300	400 Kg	XCDHB 2	KP2N-30	Bluish green
	APPLICATIONS <ul style="list-style-type: none"> • Bearings • Slide bearings - Rails 										
MULTI BLACK WSC 2	LONG LASTING WITH GRAPHITE AND MoS2	<ul style="list-style-type: none"> • Excellent stability under harsh mechanical stress • Remarkable adhesiveness even under intense water washing • Extreme pressure • Contains graphite and MoS2 	2	-30°C to +150°C	Lithium Calcium	Semi-Synthetic	360	400 Kg	XCDHB 2	KPF2N-30	Opaque black
	APPLICATIONS <ul style="list-style-type: none"> • Recommended for lubricating components operating under intense loads and/or shocks. Excellent for attached, immobile equipment and mobile motors. 										

NAME	GREASE DESCRIPTION HIGH-PERFORMANCE	ADVANTAGES	NLGI GRADE	OPERATING TEMPERATURE	THICKENING AGENT	TYPE OF BASE OIL	40°C HdB VISCOSITY	WELDING LOAD	CLASSIFICATION		COLOUR
									ISO 12924-L	DIN 51502	
XPERF PU V 2	LONG LASTING										
	APPLICATIONS <ul style="list-style-type: none"> • Bearings • Electric motors • Slide bearings • Industrial use: Heat chambers, heat tunnel chains, plastic production, painting lines, etc. 	<ul style="list-style-type: none"> • Performance durability in extreme temperature conditions • Excellent protection of equipment running at high speeds 	2	-40°C to +180°C	Polyurea	Synthetic PAO	68	315 Kg	XDFEB 2	KP2R-40	Beige
XPERF PTFE WC 1.5	WITH PTFE										
	APPLICATIONS <ul style="list-style-type: none"> • Bearings • Slide bearings - Rails • Central lubrication • Gearing • Reducers 	<ul style="list-style-type: none"> • Water and steam insoluble • Excellent pumpability • Reinforced lubricating ability through additional additives enhancing the friction coefficient • Extreme pressure 	1.5	-30°C to +160°C	Lithium Complex	Semi-Synthetic	295	> 620 Kg	XC FEB 1-2	KPF1.5-30	Beige
XPERF WSC 2	LONG LASTING HIGH TEMPERATURES										
	APPLICATIONS <ul style="list-style-type: none"> • Bearing • Ball and roller bearings • Rails • Slide bearings • Electric motors • Central Lubrication 	<ul style="list-style-type: none"> • Excellent water washing resistance • Excellent load resistance • Excellent mechanical stability 	2	-20°C to +180°C	Lithium Complex	Mineral	150	400 Kg	XB FEB 2	KP2R-20	Opaque blue
XPERF PLUS WSC 2	VERY HIGH PERFORMANCE										
	APPLICATIONS <ul style="list-style-type: none"> • Bearings (crusher sieves, pelleting presses, etc.) • Slide bearings - Rails • High-pressure central lubrication 	<ul style="list-style-type: none"> • Excellent heavy-load resistance • Excellent water resistance • Excellent protection against corrosion • Excellent mechanical stability 	2	-30°C to +140°C	Calcium Sulfonate Complex	Mineral	290	> 600 Kg	XC(F)DIB2	KP2N-30	Dark blond



NAME	GREASE DESCRIPTION SPECIFIC APPLICATIONS	ADVANTAGES	NLGI GRADE	OPERATING TEMPERATURE	THICKENING AGENT	TYPE OF BASE OIL	40°C HdB VISCOSITY	WELDING LOAD	CLASSIFICATION		COLOUR
									ISO 12924-L	DIN 51502	
SPECIAL BENTONE	HIGH-TEMPERATURE INFUSIBLE										
	APPLICATIONS <ul style="list-style-type: none"> • Slow bearings • Slide bearings - Rails • Central lubrication • Heat chambers/Jaw crushers/Kiln cars/ Sheet and strip mills/Steelworks • Factories producing aluminium, concrete, glass and rubber. 	<ul style="list-style-type: none"> • High-temperature performance 	1.5	-20°C to +180°C	Inorganic (Modified clay)	Mineral	460	200 Kg	XBFEB 1-2	K1.5R-20	Dark blond
SPECIAL BRH	BREAKER										
	APPLICATIONS <ul style="list-style-type: none"> • Hydraulic breakers • Slide bearings - Rails • Central lubrication • Articulations/Bearings/Drill pipes/Chisels and construction machinery operating around water and dust 	<ul style="list-style-type: none"> • Excellent water resistance • Great mechanical stability • Extreme pressure 	2	-20°C to +150°C	Lithium Calcium	Semi-Synthetic	360	> 400 Kg	XCDHB 2	KPF2N-20	Opaque black
SPECIAL CU	COPPER PASTE										
	APPLICATIONS <ul style="list-style-type: none"> • Motor exhaust collectors and cylinder heads • Brake shoe axes • Heat chamber transport systems • Steam valves, Flange bolts for steam pipes • Bolts/Nuts/Cables/Chains/Any machinery operating outside or exposed to a corrosive atmosphere 	<ul style="list-style-type: none"> • Extreme temperature performance 	2	-35°C to +1100°C	Inorganic	Minéral	485	-	XCGDB2	KF2T-35	Iridescent opaque copper
SPECIAL SELLETTE	ARTICULATED LORRY FIFTH WHEEL										
	APPLICATIONS <ul style="list-style-type: none"> • Lorry fifth wheels, mounting plates for guidance, rails, rack and pinion 	<ul style="list-style-type: none"> • Excellent water resistance • Extreme pressure 	2	-10°C to +120°C	Lithium Calcium	Mineral	1032	400 Kg	XACIB2	KPF2K-10	Opaque black
SPECIAL SCOPE	EXTREME PRESSURE STRONG ADHESIVE PROPERTIES										
	APPLICATIONS <ul style="list-style-type: none"> • Telescopic masts for handling equipment • Slide bearings - Rails • Gearing/Reducers 	<ul style="list-style-type: none"> • Excellent water resistance • Excellent adhesive properties • Extreme pressure • Excellent mechanical stability 	1	-30°C to + 150°C	Calcium Sulfonate Complex	Semi-Synthetic	1500	-	XCEHB 1	KPF1N-40	Opaque chalk
SPECIAL SPECA H	INSULATED CABLING										
	APPLICATIONS <ul style="list-style-type: none"> • Insulted cabling 	<ul style="list-style-type: none"> • Minimised friction • No risk of sheath cracking • Remarkable stability over time 	4/5	-10°C to + 30°C	Petroleum jelly	Mineral	150	-	-	-	Dark blond
SPECIAL CLXL	UNIFORM SPECIFIC, EXTENDED LENGTH CENTRAL LUBRICATION										
	APPLICATIONS <ul style="list-style-type: none"> • Bearings • Slide bearings - Rails • Extended length central lubrication 	<ul style="list-style-type: none"> • Excellent mechanical stability 	1	-30°C to +130°C	Lithium	Mineral	150	250 Kg	XCCEB 1	KP1K-30	Light blond

MARINE GREASE

Proven water-tightness

BROSIA

SEA

NAME	GREASE DESCRIPTION MARINE	ADVANTAGES	NLGI GRADE	OPERATING TEMPERATURE	THICKENING AGENT	TYPE OF BASE OIL	40°C HdB VISCOSITY	WELDING LOAD	CLASSIFICATION		COLOUR
									ISO 12924-L	DIN 51502	
SEA TACK W 1.5	HIGH-RESISTANCE TO SEA WATER AND BAD WEATHER	<ul style="list-style-type: none"> • Excellent water resistance • Excellent anti-corrosion protection 	1.5	-40°C to +120°C	Calcium Lithium	Semi-Synthetic	260	250 Kg	XDCIB 1.5	KP1.5K-40	Emerald green
	APPLICATIONS <ul style="list-style-type: none"> • Slide bearings - Rails • Bearings 										
XPERF PLUS WSC 2	VERY HIGH PERFORMANCE	<ul style="list-style-type: none"> • Excellent heavy-load resistance • Excellent water resistance • Excellent protection against corrosion • Excellent mechanical stability 	2	-30°C to +140°C	Calcium Sulfonate Complex	Mineral	290	> 600 Kg	XC(F)DIB2	KP2N-30	Dark blond
	APPLICATIONS <ul style="list-style-type: none"> • Bearings (crusher sieves, pelleting presses, etc.) • Slide bearings - Rails • High-pressure central lubrication 										



ECO-FRIENDLY GREASE

A choice to help the planet

BROSIA

MULTI



NAME	GREASE DESCRIPTION AURAE MULTISERVICE	ADVANTAGES	NLGI GRADE	OPERATING TEMPERATURE	THICKENING AGENT	TYPE OF BASE OIL	40°C HdB VISCOSITY	WELDING LOAD	CLASSIFICATION		COLOUR
									ISO 12924-L	DIN 51502	
 MULTI AURAE WC 2	EXTREME PRESSURE LITHIUM-FREE	<ul style="list-style-type: none"> • Extreme pressure • Water resistant • Excellent anti-corrosion protection • Lithium-free 	2	-30°C to +120°C	Anhydrous Calcium	Mineral	310	330 Kg	XCCIB2	KP2K-30	Green
	APPLICATIONS <ul style="list-style-type: none"> • Bearings • Rolling bearings • Slide bearings - Rails • Cutting heads/Cutting chains/ Drill pipe threading/Screw couplers/ Rolling equipment buffers/Wheel flanges/ Railway track curves/Etc. 										
 MULTI AURAE WSC 2	EXTREME PRESSURE BIODEGRADABLE	<ul style="list-style-type: none"> • Solid mechanical stability • Extreme pressure • Excellent anti-corrosion properties • Water resistant • Biodegradable (OCDE 301B > 60% at 28 days) 	2	-30°C to +120°C	Lithium	Esters Synthetic Plant-based	200	400 Kg	XCCHB 2	KP2K-30	Opaque cream
	APPLICATIONS <ul style="list-style-type: none"> • Roller and ball bearings • Slide bearings • Support bearings • High-pressure central lubrication • Industrial equipment used in sensitive zones (ex: turbines hydraulics or hydroelectric turbine bearings) 										



BROSIA

***“ Brosia is to grease
what ambrosia
was to the gods. ”***

Brosia has its roots in the word ambrosia, which refers to the syrupy nectar imbibed by the gods of Mount Olympus that bestowed immortality on any mortal who sipped it.



HAFA
L'esprit **pionnier**

contact@hafa.fr
www.hafa.fr